

**PLEASE CHECK WWW.MOLEX.COM FOR LATEST PART INFORMATION**

**Part Number:** [0447690602](#)  
**Status:** **Active**  
**Overview:** [microfit\\_30](#)  
**Description:** 3.00mm (.118") Pitch Micro-Fit 3.0, BMI™ Receptacle Header, Dual Row, Vertical, with Press-fit Plastic Pegs, 0.38µm (15µ") Gold (Au) Selective, 6 Circuits

**Documents:**

[3D Model](#) [Product Specification PS-44300-001 \(PDF\)](#)  
[Drawing \(PDF\)](#) [RoHS Certificate of Compliance \(PDF\)](#)

**Agency Certification**

CSA	LR19980
TUV	R72081037
UL	E29179

**General**

Product Family	PCB Receptacles
Series	<a href="#">44769</a>
Application	Board-to-Board, Wire-to-Board
Overview	<a href="#">microfit_30</a>
Product Literature Order No	USA-106
Product Name	Micro-Fit 3.0 BMI™

**Physical**

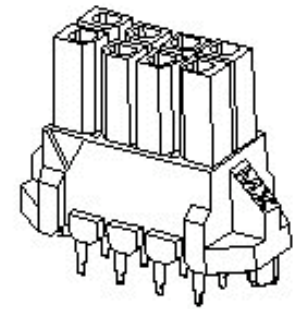
Circuits (Loaded)	6
Durability (mating cycles max)	30
Flammability	94V-0
Glow-Wire Compliant	No
Material - Metal	Phosphor Bronze
Material - Plating Mating	Gold
Material - Plating Termination	Tin
Number of Rows	2
Orientation	Vertical
PCB Locator	Yes
PCB Retention	Yes
PCB Thickness Recommended (in)	0.062 In
PCB Thickness Recommended (mm)	1.60 mm
Packaging Type	Tray
Pitch - Mating Interface (in)	0.118 In
Pitch - Mating Interface (mm)	3.00 mm
Plating min: Mating (µin)	15.2
Plating min: Mating (µm)	0.38
Plating min: Termination (µin)	100
Plating min: Termination (µm)	2.5
Polarized to PCB	Yes
Surface Mount Compatible (SMC)	No
Temperature Range - Operating	-40°C to +105°C
Termination Interface: Style	Through Hole

**Electrical**

Current - Maximum per Contact	5A
Voltage - Maximum	250V

**Solder Process Data**

Duration at Max. Process Temperature (seconds)	5
Lead-free Process Capability	Wave Capable (TH only)
Max. Cycles at Max. Process Temperature	1



Series

*image - Reference only*

**EU RoHS**

**ELV and RoHS Compliant**

**REACH SVHC**

Not Reviewed

**Halogen-Free**

**Status**

**Not Halogen-Free**

**Need more information on product environmental compliance?**

Email [productcompliance@molex.com](mailto:productcompliance@molex.com)  
 For a multiple part number RoHS Certificate of Compliance, [click here](#)

Please visit the [Contact Us](#) section for any non-product compliance questions.

**China RoHS**



**Search Parts in this Series**

[44769Series](#)

**Mates With**

[44428](#) , [44300](#) , [44432](#)

Process Temperature max. C

260

**Material Info**

**Reference - Drawing Numbers**

Packaging Specification

PK-44769-001

Product Specification

PS-44300-001, RPS-44300-001

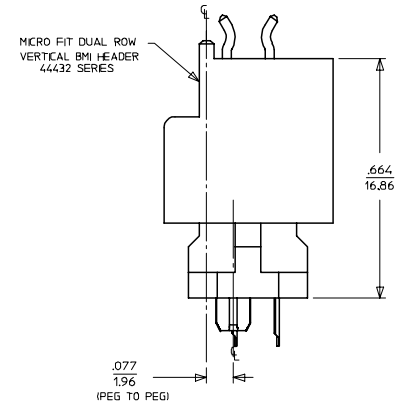
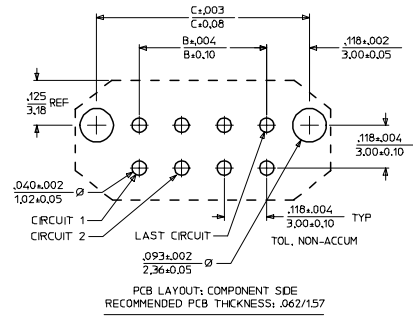
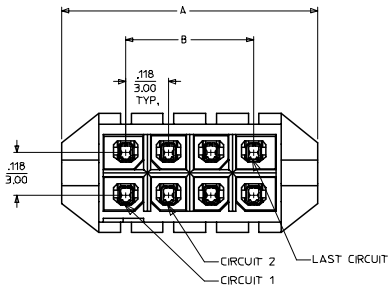
Sales Drawing

SD-44769-001

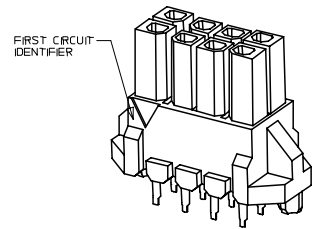
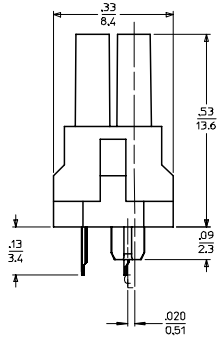
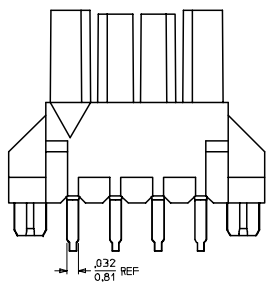
This document was generated on 05/21/2010

**PLEASE CHECK [WWW.MOLEX.COM](http://WWW.MOLEX.COM) FOR LATEST PART INFORMATION**

CIRCUIT SIZE	DIM. "A"	DIM. "B"	DIM. "C"	MATERIAL NUMBER	NUMBER OF POSITIONS	PLATING OPTION
4	.472/(12.00)	.118/(3.00)	.354/(9.00)	44769-0401	04	A
6	.591/(15.00)	.236/(6.00)	.472/(12.00)	44769-0402	04	B
8	.709/(18.00)	.354/(9.00)	.591/(15.00)	44769-0403	04	C
10	.827/(21.00)	.472/(12.00)	.709/(18.00)	44769-0601	06	A
12	.945/(24.00)	.591/(15.00)	.827/(21.00)	44769-0602	06	B
14	1.063/(27.00)	.709/(18.00)	.945/(24.00)	44769-0603	06	C
16	1.181/(30.00)	.827/(21.00)	1.063/(27.00)	44769-0801	08	A
18	1.299/(33.00)	.945/(24.00)	1.181/(30.00)	44769-0802	08	B
20	1.417/(36.00)	1.063/(27.00)	1.299/(33.00)	44769-0803	08	C
22	1.535/(39.00)	1.181/(30.00)	1.417/(36.00)	44769-1001	10	A
24	1.654/(42.00)	1.299/(33.00)	1.535/(39.00)	44769-1002	10	B
				44769-1003	10	C
				44769-1201	12	A
				44769-1202	12	B
				44769-1203	12	C
				44769-1401	14	A
				44769-1402	14	B
				44769-1403	14	C
				44769-1601	16	A
				44769-1602	16	B
				44769-1603	16	C
				44769-1801	18	A
				44769-1802	18	B
				44769-1803	18	C
				44769-2001	20	A
				44769-2002	20	B
				44769-2003	20	C
				44769-2201	22	A
				44769-2202	22	B
				44769-2203	22	C
				44769-2401	24	A
				44769-2402	24	B
				44769-2403	24	C



MATED DIMENSIONS  
(FOR ALIGNMENT OF PCB'S IN X & Y DIRECTIONS)



NOTES:  
 1. MATERIAL:  
 HOUSING: HIGH TEMP. NYLON, GLASS FILLED, UL 94V-0, COLOR - BLACK  
 TERMINALS: PHOSPHOR BRONZE ALLOY  
 2. FINISH:  
 (A) - .000100/0.00254 MIN. TIN OVER  
 .000050/0.00127 MIN. NICKEL  
 (B) - .000015/0.00039 MIN. SELECTIVE GOLD IN CONTACT AREA,  
 .000100/0.00254 MIN. SELECTIVE TIN IN PC TAIL AREA,  
 BOTH OVER .000050/0.00127 MIN. NICKEL  
 (C) - .000030/0.00076 MIN. SELECTIVE GOLD IN CONTACT AREA,  
 .000100/0.00254 MIN. SELECTIVE TIN IN PC TAIL AREA,  
 BOTH OVER .000050/0.00127 MIN. NICKEL  
 \* THE PRIMARY SHIPPING CARTON WILL BE LABELED "COMPLIANT TO"  
 RoHS DIRECTIVE 2002/95/EC AND ELV ANNEX I OF DIRECTIVE 2000/53/EC."  
 CARTONS WITHOUT THIS LABEL MAY CONTAIN PRODUCT WITH TIN/LEAD  
 IN THE PC TAIL AREA.  
 3. PRODUCT SPECIFICATIONS: PS-44300-001  
 4. PACKAGING SPECIFICATION: PK-44769-001.  
 5. MATES WITH MOLEX MICRO-FIT BMI HEADER SERIES 44432, 44428, AND 44300.  
 6. MOLEX RECOMMENDS THE USE OF MICRO-FIT TEST PLUG (SERIES 44242) WHENEVER  
 CONTINUITY TESTING IS PERFORMED. TEST PLUGS MUST NOT BE USED TO MAKE OR  
 BREAK UNDER LOAD. MOLEX DOES NOT RECOMMEND USING STANDARD MATING  
 COMPONENTS (SERIES 44432, 44428, OR 44300) FOR TESTING PURPOSES.

ADD MATING DIMENSIONS EC NO: UCP2005-2881 DRWN: JLOWE 2005/07/07 CHKD: SSOUSEK 2005/07/13 APPR: ESMITH 2005/07/15	QUALITY SYMBOLS -0 -0	GENERAL TOLERANCES (UNLESS SPECIFIED)	SCALE ---	DESIGN UNITS INCH	THIRD ANGLE PROJECTION	REVISE ON CAD ONLY		
		mm INCH	DIMENSION STYLE IN/MM		TITLE			
		4 PLACES ± --- ± --- 3 PLACES ± --- ± .010 2 PLACES ± 0.25 ± .014 1 PLACE ± 0.35 ± ---	DRAWN BY DATE BURLESON 2000/07/13		CHECKED BY DATE MUELLER 2000/07/13		APPROVED BY DATE EDGLEY 2000/07/13	
		ANGULAR ±1/2°	DRAFT WHERE APPLICABLE		MATERIAL NO. DOCUMENT NO. SHEET NO.		SEE CHART SD-44769-001 1 OF 1	
MUST REMAIN WITHIN DIMENSIONS		THIS DRAWING CONTAINS INFORMATION THAT IS PROPRIETARY TO MOLEX INCORPORATED AND SHOULD NOT BE USED WITHOUT WRITTEN PERMISSION						

MICRO-FIT (3.0) BMI  
 VERT. RECEPTACLE ASS'Y  
 4 - 24 CIRCUIT  
 MOLEX MOLEX INCORPORATED